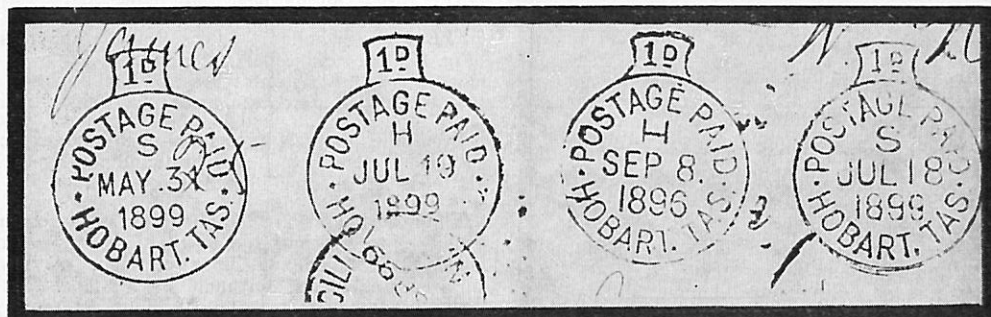


Hobart Postmarks: 1812-1901

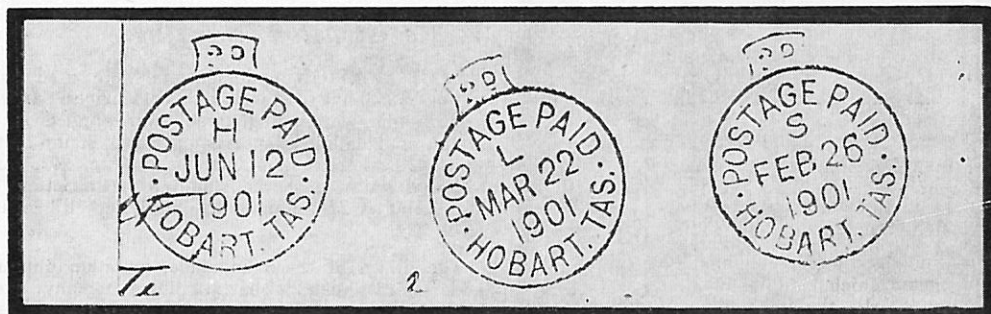
(Continued from page 1206, Vol. 88, No. 12, December 1974)

By John Clemente

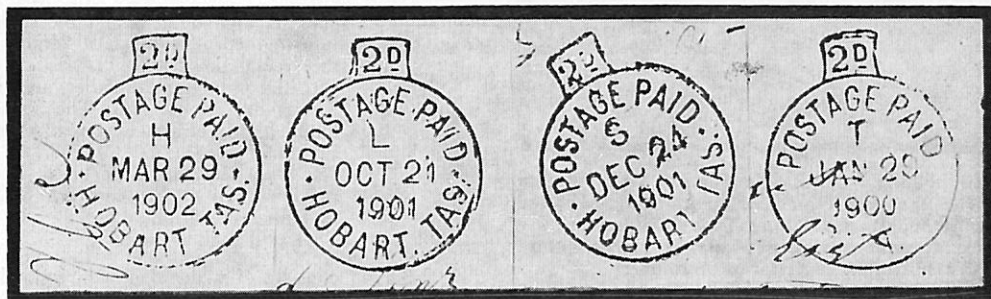


Type 1

Type 2



Type 3



Type 4

Figure 19. Postage Paid Markings Types 1, 2, 3 and 4.

IV. Postage Paid Markings

THESE MARKINGS were introduced in 1896 and were likely to have been discontinued at the end of 1902.

They were apparently introduced to deal with bulk postage which must have increased substantially with

the increase in commercial activity in the State. The sender could hand in a large quantity of mail at the bulk mail counter and pay for the total postage. No stamps would be affixed, meaning a saving in time for the sender and expenditure for the post office.

The postmarks would indicate the amount of postage

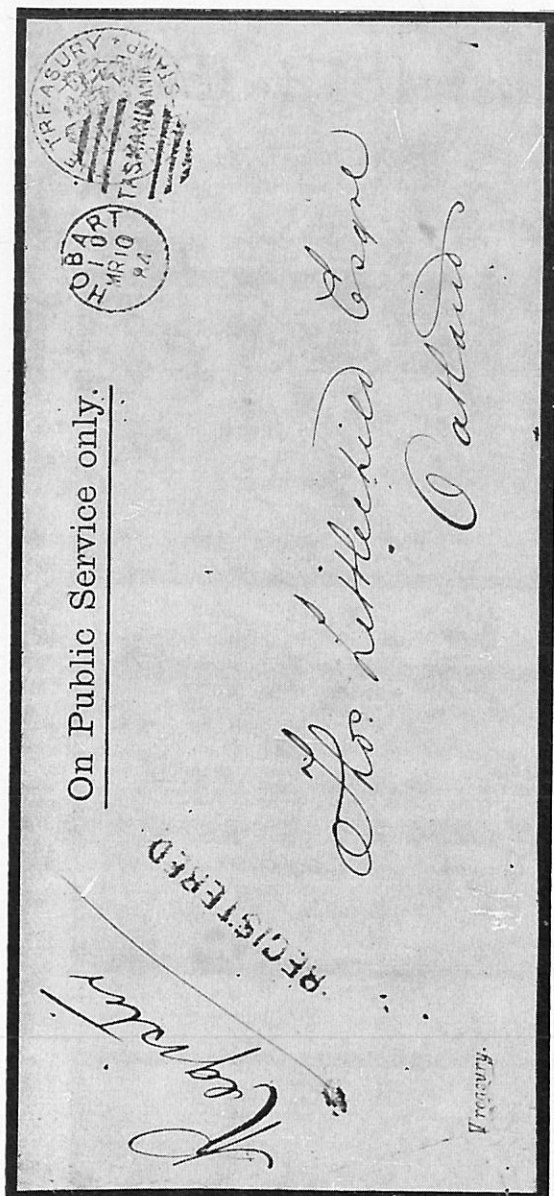


Figure 20. 1884: "On Public Service Only" Cover bearing The Treasury Frank Stamp in black canceled with Hobart departure marking Type 2Da and bearing stamped endorsement REGISTERED in black. Note manuscript registration number.

paid per article, i.e., 1d or 2d, and no further cancellation was required.

There are four types:

TYPE 1
(Fig. 19)
consists of a circle 25mm diameter surmounted by a tablet containing 1d, within the circle were the words POSTAGE PAID and HOBART TAS. separated by star stops with the date in the centre, year in four figures. Code letters H & S. Applied in black. All covers found by the author bear 1899 dates.

TYPE 2
(Fig. 19)
Similar to Type 1 with same code letters H & S, but with dot stops.
Early date: Sept. 8, 1896.
Late date: July 18, 1899.

TYPE 3
(Fig. 19)
consists of a circle 26mm diameter surmounted by a tablet containing 2d, within the circle were the words POSTAGE PAID and HOBART TAS. separated by dot stops with date in the centre, year in 4 figures. Code letters HLS. Applied in black. All covers found by the author bear 1901 dates.

TYPE 4
(Fig. 19)
Similar to Type 3 but with cross stops and code letters HLST.
Early date: Jan. 20, 1900.
Late date: March 29, 1902.

From the above it seems reasonable to expect that the code letters L & T will be found for Types 1 & 2, and code letter T for Type 3.

These postmarks are hard to find, as the commercial envelopes to which they had been applied would have stood little chance of being retained. A few have survived due to the fortunate circumstance that some mail dispatched by Tattersalls Lotteries during this period, was returned to the company unclaimed, and retained as proof of posting.

V. Registration Markings

REGISTRATION endorsements were used as early as 1853 by all Tasmanian post offices. In the beginning the word "Registered" was applied in manuscript, and later, a special engraved stamp with the word "Registered" was introduced (Fig. 20), this was followed by an engraved stamp with the letter "R" in an oval (Fig. 21), and finally, the letter "R" in a circle (Fig. 22).

The origin of these unnamed, undated, unnumbered endorsements cannot be attributed to any one post office in absence of town postmarks, but in addition to these, there are three types of registration postmarks used at the Hobart Post Office from the early 1890s onwards.

TYPE 1
(Fig. 23)
consists of a double-lined rectangle with indented corners 43mm x 24mm, within the rectangle REGISTERED and No. with the progressive number, and fleuron. It was applied in red. The author has found it only on outgoing registered mail. Period of usage 1891 to 1893.

(It is possible that a postmark in all respects similar to this may have been used in Launceston.)

This postmark is rare.

TYPE 2
(Fig. 24)
consists of a double-lined rectangle with indented corners 41mm x 23mm, within the rectangle REGISTERED, a progressive number, and HOBART. It was applied in blue usually, but has been found occasionally in violet, and there is one example in red. Applied to outgoing, incoming and transit registered mail.
Early date: Dec. 12, 1894.
Late date: May 9, 1904.

TYPE 3
(Fig. 25)
consists of a circle diameter 24mm, containing the words REGISTERED HOBART separated by circle stops, date in two lines, year in two figures. Applied

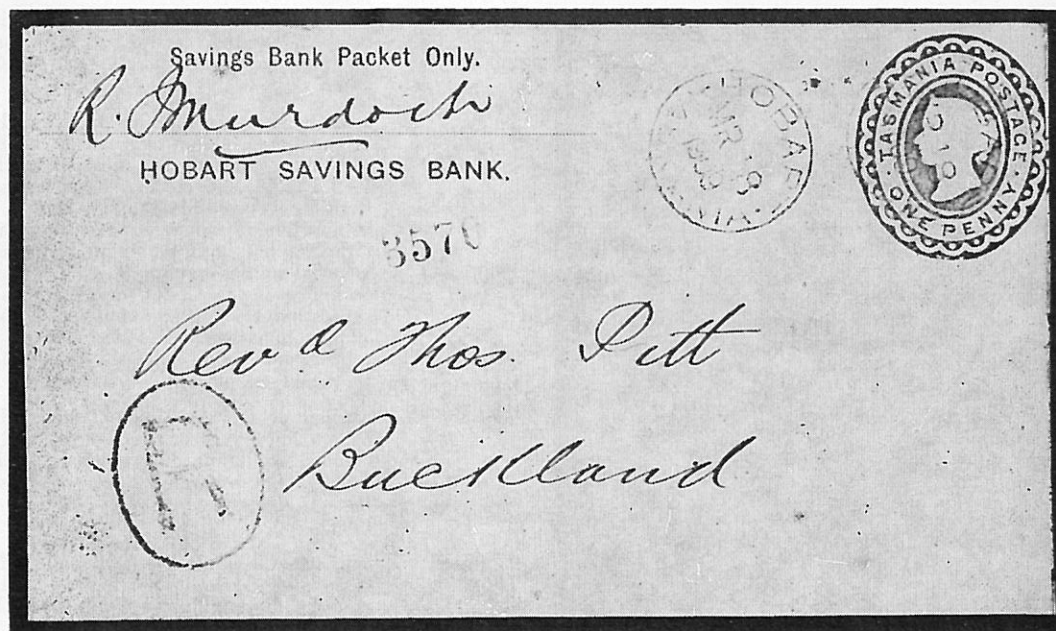


Figure 21. 1909: Embossed envelope canceled with Hobart departure marking Type 11DA (note the absence of code letter) and bearing the stamped endorsement "R" in oval. Note printed registration number.

in black, but found also in red (1904), and in blue (1914).¹
Code letters A H L S.

Applied to outgoing, incoming and transit registered mail. Its use on outgoing mail would have been commenced in 1901 when it became customary to use a stamped unframed registration number on registered mail, making the use of Type 2 unnecessary. Used from 1896 onwards.

Both Types 1 & 2 can be considered precursors of registration labels.

VI. Telegraph Markings

THE MAJORITY of these postmarks have not been found on postage stamps but they have been included in this monograph firstly because they are found on telegraph forms which constitute a type of postal service, and secondly, because some of them have been, or are likely to be, found on postage stamps. The reason for this being, that after the Telegraph Department was amalgamated with the Postal Department in 1894 whenever a receipt for a telegram was issued postage stamps would be applied to the butt of the same and canceled accordingly (Fig. 26). Also, the fee due to the postal department for the transmission of a telegram would be paid in stamps which would be affixed to the form and cancelled by the postal officer at the time the telegram was lodged.

There are ten types:

TYPE 1
(Fig. 27) consists of a double oval (outer oval with double rim) 41mm x 27mm, in blue, with TELEGRAPH OFFICE and HOBART separated by rosette stops, in the outer oval, with the date in the inner oval.
Date: Nov. 21, 1890.
This marking was likely to have been introduced in the mid 1880s.

TYPE 2
(Fig. 27)

TYPE 3
(Fig. 27)

TYPE 4
(Fig. 27)

TYPE 5
(Fig. 27)

consists of a double oval (outer oval with double rim) 41mm x 27½mm, in violet, with TELEGRAPH OFFICE and HOBART separated by cross stops, in the outer oval, and date in the inner oval.
Date: Feb. 7, 1894.

consists of an oblong 55mm x 26½mm with rounded corners applied in violet, divided into three horizontal compartments the top containing the word HOBART, the middle, the date and progressive number separated by a decorative stop, and the lower, the word TIME.
Found used from Nov. 12, 1891, to April 21, 1892.

consists of an oblong 55mm x 27mm with rounded corners, applied in blue, divided into three horizontal compartments, the top containing the word HOBART, the middle, the date and progressive number separated by decorative cross stop, and the lower, the word TIME.
Found dated March 19, 1894.

consists of an oblong 65mm x 30mm with rounded corners, applied in violet, divided into three horizontal compartments



Figure 22. Registration endorsement, "R" in circle.

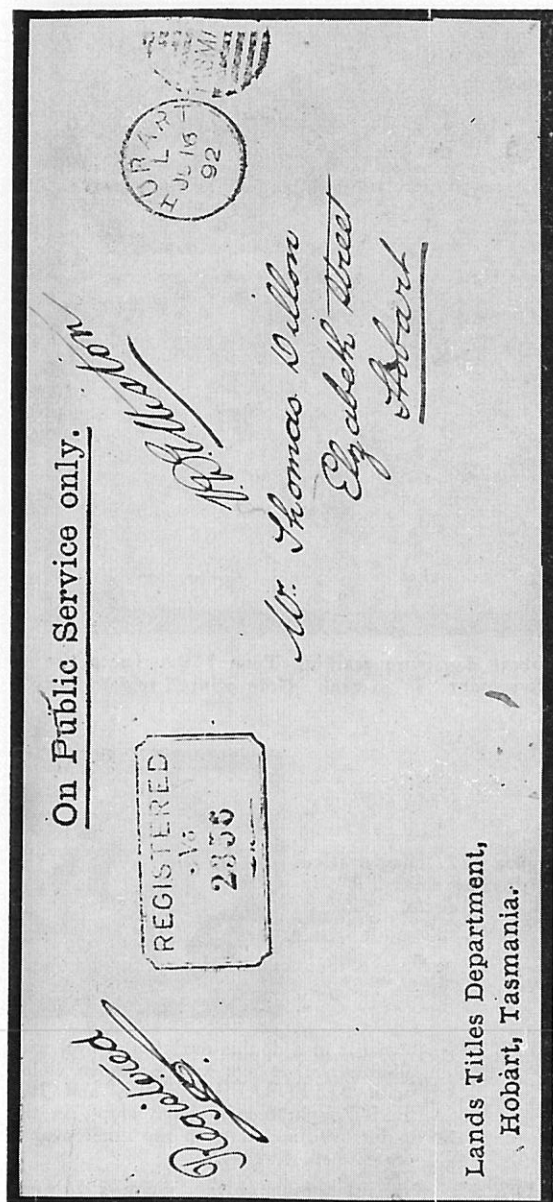


Figure 23. 1892: "On Public Service Only" registered cover bearing Hobart departure marking Type 6D and the registration marking Type 1 in red. Signature "V. D. Elliston" is in lieu of a frank stamp.

the top containing the word HOBART, the middle, the date and progressive number separated by decorative cross stop, the lower, the word TIME.
Found dated Sept. 17, 1894.

TYPE 6
(Fig. 28)

consists of a circle 23mm diameter, date in two lines, year in two figures, applied in black, containing the words HOBART TASMANIA separated by dot stops level with the top of the letters of HOBART.
Early date: Dec. 30, 1896.
Late date: Jan. 28, 1897.

This postmark was used also as an arrival marking on mail addressed to Hobart, but in such cases it always had a code letter.

TYPE 7
(Fig. 28)

consists of a circle 24mm diameter, date in two lines, year in two figures, applied in black, containing the words HOBART TASMANIA separated by circle stops.⁴
Period of usage 1899-Jan. 19, 1905.
In addition to being found on telegraph forms, it has been found on high value pictorial stamps watermarked "TAS" and on high value tablets of the 1903/5 issue, suggesting that these stamps had come off telegrams which had been lodged for transmission and cancelled accordingly by the postal officer.⁴

TYPE 8
(Fig. 28)

consists of a circle 25mm diameter, date in two lines, year in two figures, applied in black, containing the words HOBART TASMANIA separated by cross stops.
Period of usage July 17, 1900-June 1, 1906.

TYPE 9
(Fig. 28)

consists of a circle 24mm diameter, date in two lines, year in two figures, applied in black, containing the words HOBART TASMANIA and no stops. Found on high value pictorials watermarked "TAS" all with 1900 dates (but the author has also found it on a pair of 1d pictorials). The author is of the opinion that this date stamp was used exclusively at the telegraph office in view of the similarity between it and the previous two types and the rarity of the same, however it has not been found on telegraph forms so far.

TYPE 10
(Fig. 28)

consists of a circle 23mm diameter, date in two lines, year in two figures applied in black, containing the words GENERAL POST OFFICE TASMANIA.⁴
Period of usage 1900-1905.
This postmark appears on very attractive covers and the author is of the opinion that these covers were prepared for philatelic purposes.

The rarity of postmarks Types 6, 8 and 10 on stamps is due to the fact that the regulations demanded that all stamps affixed to telegrams lodged for transmission, had to be destroyed, but it appears that a few must have escaped destruction and reached the general public.

VII. Special Markings

THIS CATEGORY includes a number of markings which are extremely uncommon. In the author's view they were not meant to be used to cancel stamps but rather, to endorse documents or envelopes originating from the office indicated. Cancellations on stamps were likely to have been accidental or applied by courtesy upon the request of philatelists.

1. **M.O.O. & S.B. TASMANIA** (Money Order Office & Savings Bank). This marking consists of a circle 23mm diameter, date in two lines, year in two figures. It has been found on a stampless envelope dated Dec. 15, 1898, by Campbell, Purves & Viney,¹ but has not been seen during this survey.

2. (Fig. 29): **MONEY ORDER OFFICE TASMANIA**. This marking has been found applied in blue to a cover

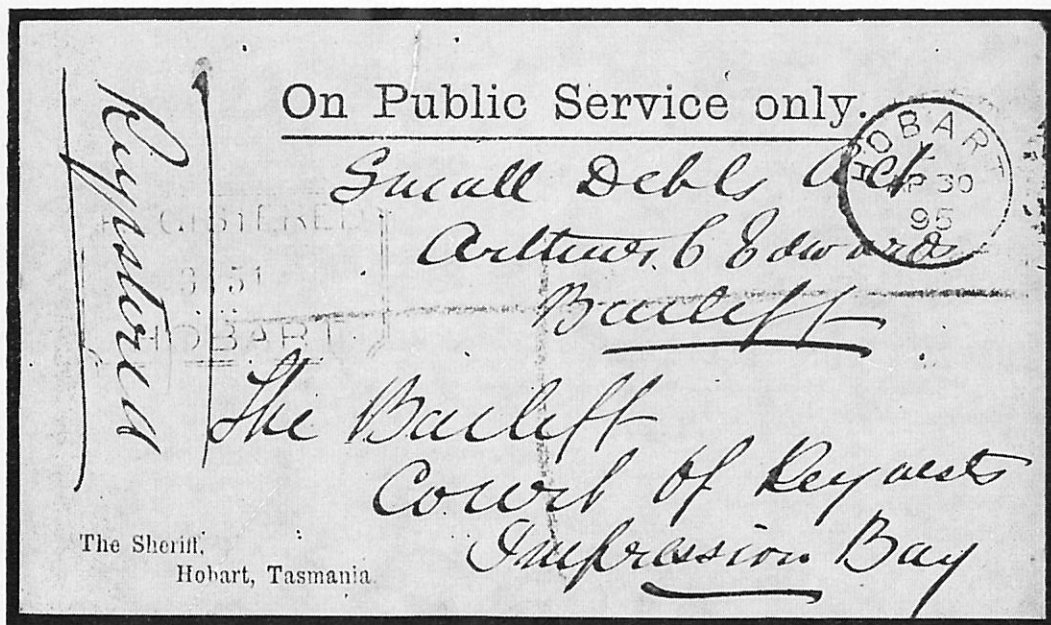


Figure 24. 1895: "On Public Service Only" registered cover bearing Hobart duplex Type 7Da, addressed to Impression Bay (Premaydena) also bearing registration marking Type 2 in blue. Note manuscript cross in brown pencil indicating registration.

dated Feb. 12, 1901. It consists of a double oval 32mm x 25mm with the words MONEY ORDER OFFICE TASMANIA in the outer oval, and the date in the inner oval.

3. (Fig. 30): PARCELS POST BRANCH—POST & TELEGRAPH DEPT HOBART TASMANIA. This marking consists of two concentric circles, the outer

circle 38mm diameter contains the words PARCELS POST BRANCH and POST & TELEGRAPH DEPT separated by cross stops, and the inner circle contains the date with HOBART above and TASMANIA below. Applied in blue. This marking has been described by Campbell, Purves & Viney¹ dated 1898. It is extremely rare. Considering that the Hobart Post Office had a



Figure 25. 1901: Registered cover from Andover to Hobart bearing, in addition to 1d and two 2d pictorial stamps canceled Andover, a 4d pictorial canceled with Hobart registration marking Type 3 applied on arrival. Note manuscript endorsement "8d to pay".

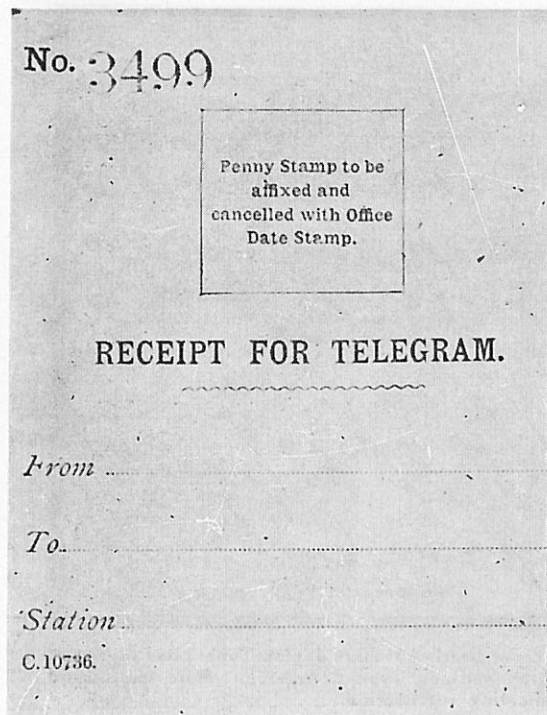


Figure 26.

Blank telegraph receipt butt. Note space for affixing of 1d stamp.

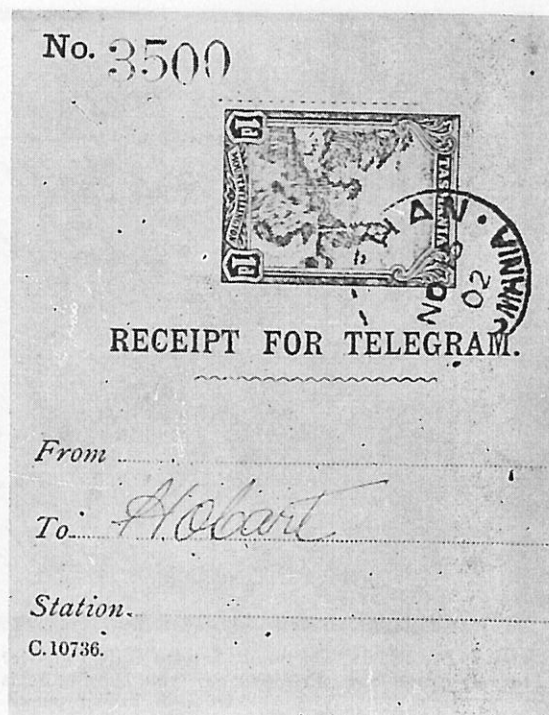


Figure 26a.

Telegraph receipt butt bearing 1d pictorial canceled Zeehan. Rare.



Figure 27.

Telegraph Markings Top Row: Type 2 at left; Type 1 at right; Second Row: Type 4 at left; Type 5 at right; Third Row: Type 3.



BE SMART. INSURE YOUR STAMP COLLECTION NOW!

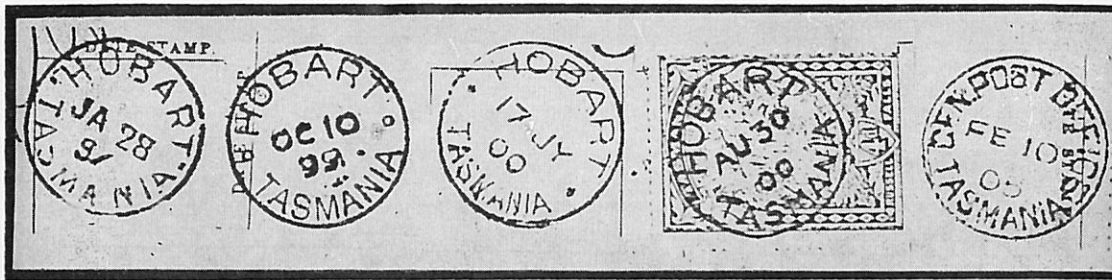


Figure 28. Telegraph Markings, left to right, Types 6, 7, 8, 9 and 10.

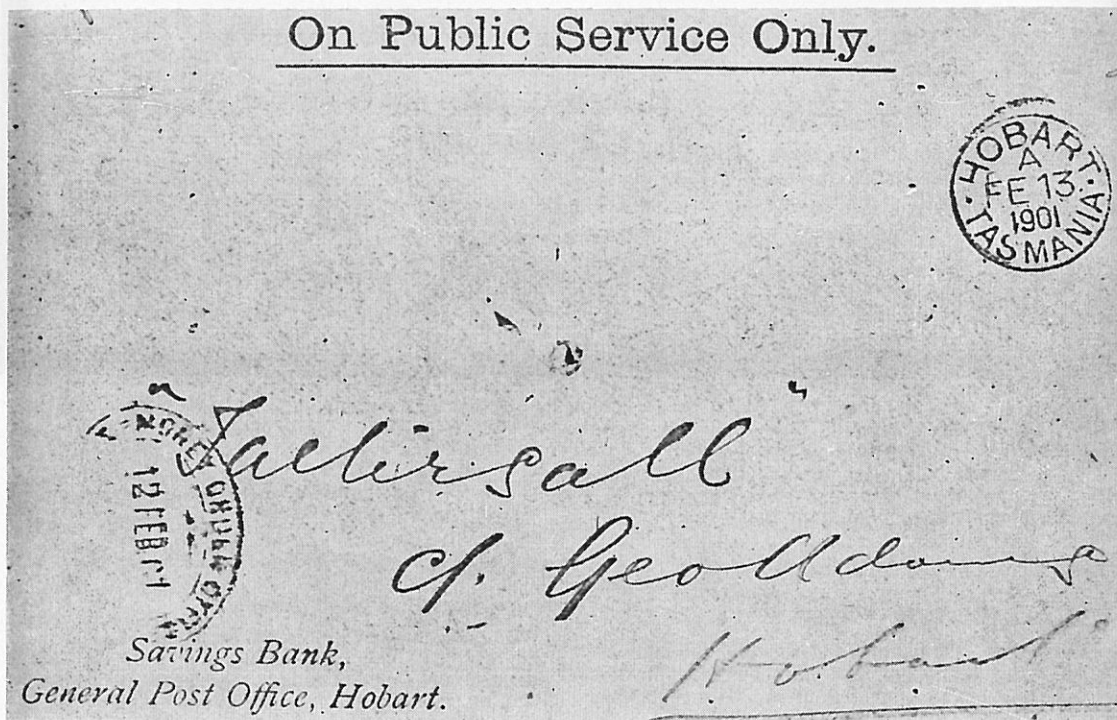


Figure 29. 1901: Official cover bearing Hobart departure marking Type 12DA, and bearing Money Order Office Tasmania oval endorsement in blue, Special Marking 2.

very large turnover of parcel mail, there should be numerous copies in existence, as is the case with all other parcel cancellations used at the Hobart Post Office since. It is reasonable therefore to think that it was not used to cancel stamps.

BIBLIOGRAPHY:

1. Campbell, Purves & Viney: "Tasmania—The Postal History and Postal Markings," Melbourne, 1962.
2. Basset Hull: "The Stamps of Tasmania", London, 1890.
3. Clemente, John: "Tasmanian Postal Notes 1889-1912". *The American Philatelist*, May 1968, Vol. 82 No. 5 p. 403.
4. Clemente, John: "New Light on Three Hobart Postmarks", *Philately From Australia*, Sept. 1966, Vol. 18 No. 3 p. 73.

ACKNOWLEDGMENTS: The author wishes to acknowledge the kind assistance of the late Peter Eldershaw, former Chief Archivist for the State of Tasmania, who also gave permission to reproduce the cover illustrated in Figure 7, Part I.



Figure 30. Facsimile of the Parcels Post Branch, Post & Telegraph Dept. Hobart Tasmania, Special Marking 3. The original may show slight differences from this drawing.

REVALUED AT 5c



THIS SIDE OF CARD IS FOR ADDRESS

PLUMAS-SIERRA RURAL ELECTRIC COOPERATIVE

P. O. Box 1136

Portola, California, 96122

A Discovery. This revalued U.S. postal card "discovery" is first reported by Jack Gardner, editor-publisher of the Postal Card Specialist. The item is a 4-cent purple Lincoln Message-Reply Card of 1962 that was revalued to 5c by means of a typographed surcharge, in green, applied by permission of the local postmaster at Portola, Calif., in January 1968 to meet the need for new 5c cards required as the result of the rate change occurring at that time. The card has gone "undiscovered" for seven years, even though copies of this revalued card were used at a number of different post offices in northern California.

UPU Overprint 'Hanky-Panky' Reported in Guatemala

ACCORDING TO a report from the International Society of Guatemala Collectors (A.P.S. Unit 36), the departing philatelic section of the Guatemala Post Office created quite a stir in stampic circles.

In a hotly-worded press release, the international society states the Universal Postal Union centenary issue "has been fraudulently presented to collectors with an overprint in a non-authorized red color."

The statement asserts that on June 13, 1974, "15,000 souvenir sheets (Scott C510a) were overprinted in black, "HOMENAJE CENTENARIO UNIVERSAL, 1874-1974". It was placed on sale in Guatemala in normal fashion; however, reports are that it already was on sale in New York, and as a result of the limited remaining supply, sales were restricted in Guatemala. The face value is 12 cents (U. S.), and is being quoted at about \$12 by dealers offering UPU material.

"To the amazement of collectors in Guatemala, notices were then seen in German philatelic papers of the UPU issue with RED overprint. No member of the Asociacion Filatelica de Guatemala had previously seen or heard of such an item.

"Information since pieced together shows that after the printing of 15,000 sheets in black as authorized, the presses were cleaned, and the printing plant was presented with 3,000 sheets to be overprinted in red. These were sent through the Post Office to Germany. There exists no decree. None were sold in Guatemala.

The item perhaps is best labeled 'monkeybusiness' and is an absolute philatelic fraud, especially at the current asking price of \$40 or so.

"Happily, the newly-elected government of Guatemala has replaced those responsible, and the Asociacion Filatelica de Guatemala has been asked to assist in planning, coordination, and checking of all future issues. Hopefully, their dedicated action will restore Guatemala's new issue practices to a position that reflects credit to the country."

(The International Society of Guatemala Collectors was formed in 1948 and with over 200 members, has two books to its credit. The first, "Guatemala I", was published in 1969 and won the Crawford Award for literature that year. "Guatemala II" has been written and is expected on the philatelic scene shortly by Robson Lowe's publishing organization. Applications for membership in the A.P.S. Unit and a sample copy of *El Quetzal*, the bimonthly society publication, may be obtained from Julian Graff, 7836 Woodward Ave., Woodridge, Ill. 60515.)

Oregon Group Elects Officers

The Southern Oregon Philatelic Society has elected its new officers for 1975. They are president, Donald Cramer; vice-president, Alexander Balogh; treasurer, William White; secretary (recording), Elsie Sterton and secretary (corresponding), Velma Bailey.

The society has named the judges for SOPEX '75, on March 29-30, 1975 at the Holiday Inn, Medford, Oregon. They are Chairman Jack Bates of Tacoma, Wash., Ken Wood of Albany, Ore., and Paul Wolf of Missoula, Mont.